



MAPLE LEAF NEWS

January 2009

PTA Web site:
<http://www.maplegrove-pta.org>

MAPLE LEAF NEWS January
2009

News from the PTA Presidents

Sasha Overholt and Kathryn Todd



Maple Grove
Elementary School



The New Year is here and with it come those New Year's resolutions. The PTA board has a few resolutions we would like to share. The first is to produce the newsletter monthly and to return to a format that includes more articles and information about the school and the PTA. With the help of our newsletter editors, Liz Lautrup and Amy Dietz, we will implement this resolution this month. We also plan to continue our efforts to go green. The newsletter will continue to be online at the PTA web page with a few copies available at the PTA corner.

We also resolved to provide more ongoing information on volunteer opportunities. In addition to the volunteer vouchers, we will try to identify opportunities on an ongoing basis for those of you who may not have filled in vouchers or did not have time then to commit.

Speaking of having time to commit, we are planning to ask the membership (at the January General PTA meeting) to vote for a change in the time commitment required for a PTA board position. Currently, a board position is a two year commitment. We plan to shorten the term for board members to one and a half years. The half year is overlap and transition to the new board. A board member would have the spring to get up to speed with an exiting board member - the summer/fall to run their position and winter/spring to bring on a new person to train as a replacement. So grab a friend and take a Board position this spring!

A final resolution is to introduce a new committee to the PTA which we hope will develop some day into a student council. Right now this committee is forming under the guidance of Marcy Roark and Mica Dute. The committee is a student group who will participate in some activity (ies) that help our community or society as a whole. Look for information on this group of student "do gooders" in the next few weeks.

Finally, we have not forgotten our commitment to present several Parent Safety nights. Unforeseen and unfortunate circumstances resulted in our decision to delay the first presentation until after the holiday break. We will be getting that first date scheduled soon.

Happy New Year to all!

Sasha Overholt & Kathryn Todd

News from the Principal: Michael Maffoni



Dear Maple Grove Parents,

Welcome back and Happy New Year 2009! It is hard to believe January is upon us and Maple Grove students are settling in to the second semester. We anticipate a fabulous five months and look forward to renewing our partnership with you.

Now that the holidays are over and the New Year is here, it is a good time to help your children settle in and refocus on their learning. The months ahead are some of the prime months for teaching and learning. Here are a few ideas you may find helpful as you think about the months ahead:

Refocus on good homework habits. Children who are most successful at homework have a set routine that rarely varies. Having a set time that never changes often takes the fight out of homework; after awhile, sitting down to work simply becomes a habit. It is also helpful to have one established place (make sure there is good lighting and seating at a table or desk) where homework is completed. As adults, you will come to enjoy an established homework time at your house to sit down yourself and read, write, catch up on conversation with the other adults in your household or just complete your own household chores.

Set goals for learning. It is true people working toward goals tend to learn and accomplish more than others. Being focused on an *achievable* and *measureable* goal helps establish focus and direction. Take a few minutes to sit and talk with your children about good goals for them. Make them short term and do-able rather than something so big your children will forget or give up on them. Examples might include *I will study my spelling words 4 times this week*, rather than *I will get 100% on all my spelling tests*, or *I will tell Mom and Dad 4 things about what I've read* or *I'll read 4 books in the next two months* rather than *I will read every single day for one hour*. Don't forget: the magic ingredient to goal setting is continually talking about, and checking, on your progress. Have your child post goals in a place where you will both remember to monitor them. **The real key to increased self-esteem is not having people say nice things about you, but being proud of something real and worthwhile you accomplished.**

Ensure time for rest and relaxation. It is good for children to be busy and to be involved in activities both in and out of school they find enjoyable. However, the number one complaint among adults (and we are supposed to be old enough to juggle all the balls we have in the air) is there is just not enough time in the day. Imagine how a 5, 8, 12 or 15 year old feels as the pace of our lives stays continually busy. Just as adults need "time off," so do our children. If your child does not have time each week with nothing to do (no activities to run to, no plans to fill their time, no people they have to be with) you may want to think about providing them with more "down time." Down time will actually increase a child's ability to remember new learning. When external stimulus is shut down, the brain will process and "imprint" its learning. Therefore, next time your child says, "I'm bored," think twice before signing them up for a new activity. It could be their boredom will increase their opportunity to relax and, in the end, learn more.

Good sleeping and eating habits are important for kids. About 9 out of 10 of us have set New Year's resolutions around eating or sleeping. Guess what? Kids need those good habits too. It is during our sleeping hours the body rebuilds its tissue and keeps the immune system in order. This is also the time the brain replays new learning and transfers it into memory. Research has shown waking up too early interrupts the most important "memory building" time for the brain. Ten hours of sleep per night is usually recommended for children and adolescents. Just as important as sleep is good nutrition. We all know the importance of fruits and vegetables. Drinking lots of water is important too.

I am sure none of this information is new. Most of us know what is good for us, but often neglect the basics of taking care of ourselves. With the start of a new year, it's an opportunity to make resolutions that will influence your child's learning.

Enjoy the winter season!

Michael Maffoni



CALENDAR FOR JANUARY 2009

January 5	No School, Teacher Inservice Day
January 6	Students Return
January 6-24	Choice Enrollment - Round I
January 7, 14, 21, & 28	8:15-9:15 K-I Classroom visits
January 8	8:00 a.m. PTA mtg
January 8	6:00 p.m. Kdg Parent Orientation for 2009-10
January 9	Midterms Issued
January 16	12:45 GeoBee – gym
January 19	No School – Martin Luther King Day
January 20-26	Kindergarten Registration for 2009-2010
January 23	12:45 Spelling Bee - gym
January 26	2:45 p.m. PIE mtg
January 29	1:00 p.m. Early Release
January 30	9:00 Wheat Ridge Area Spelling Bee @ Everitt Middle School



Sign up your child now for afterschool music classes right here at Maple Grove Elementary **STARTING Nov. 3!** Your child will LOVE learning and playing music with their peers! We offer **Beginning Keyboard** and **Beginning Guitar** classes that are affordable and convenient. Each class is filled with games, laughter, and FUN! **Keyboards For Kids** has been teaching children to love music since 2003. Kids love our teachers and our positive supportive atmosphere! Enrolling now! Classes are small and fill quickly. We have payment plans and tuition assistance available. See our website to register and get more information about us. Look for our flyer in your child's folder!

www.KeyboardsForKids.com

303-215-1KFK (1535)

DEAR EDITOR

The Maple Leaf newsletter is published monthly by the Maple Grove PTA. We hope to keep you updated on Maple Grove news and informed about issues that affect your children.

To submit articles: **Email plain text or MS Word document to: mapleleafnews@yahoo.com**

**ARTICLE DEADLINE –22nd January
NO EXCEPTIONS!**

JEFFERSON COUNTY BUDGET UPDATE



IMPORTANT!!! To view the Executive Summary of the Adopted Budget for Jefferson County (June, 2008), please go to the following web site:

<http://www.jeffcopublicschools.org/finance/documents/ExecSummary0809Small.pdf>

Attention 2009-2010 Kindergarten Parents

- ◆ **Registration for 2009-2010 Kindergarten will be held on January 20-26 from 7:30-3:00.** Please bring a copy of the birth certificate, immunization record, and 3 proofs of residency (Excel Energy bill, mortgage statement or rental agreement, driver's license or phone bill, etc).
- ◆ **Parents that do not live in the Maple Grove attendance area need to complete a choice enrollment application to enroll their child in Kindergarten for the 2009-2010 school year.** Round one choice enrollment applications must be turned in to the main office between January 6-24. Students that reside in the Maple Grove attendance area will fill Kindergarten vacancies first. Round one choice enrollment students, using a lottery system, will then fill any remaining vacancies.
- ◆ **All 2009-2010 kindergarten parents are invited to attend a parent informational meeting on January 08, at 6:00 PM., in the gym.** An overview of the Maple Grove Kindergarten options will be presented and parent questions will be answered.
- ◆ **Kindergarten Classroom Visits for 2009-2010 parents will be held every Wednesday in January from 8:15-9:15 a.m.**



Punctuality is Important

Please remember school begins promptly at 8:00 a.m. We have seen an increased number of students arriving at school after the 8:00 a.m. bell. Tardiness is disruptive to classroom routines and makes children begin a day with a rushed feeling. Please work to make sure your child is waiting in line outside his/her homeroom class, or on the west blacktop, prior to the first bell at 7:55 a.m. so the day can begin on a positive note. *If you find your student is having difficulty getting to school on time, feel free to visit with your classroom teacher.* They can be very beneficial in providing strategies to assist you.

Inclement Weather and Traffic Concerns

As the cold weather continues, please remember we all must adhere to Maple Grove’s school-wide policies regarding traffic in our parking lot and dressing children for the weather. Here are a few reminders:

- Always send your child to school dressed in a cold weather jacket with a hat (hood) and gloves.
- When the gold “Grizzly” flap is up, children go directly in the front door to their classroom.
- Traffic tends to increase on cold mornings and afternoons. More parents tend to drive their children to school, putting a third more traffic through our drop-off zones.

Thank you in advance for your patience and extra attention to traffic flow & pedestrian safety.

Traffic increases at 7:50am- 7:55 am. Consider dropping off your child a few minutes earlier to decrease the congestion in the parking lot at these times.

Safety Alert: Safety Alert:

Please refrain from driving down Braun Road behind the school before and after school. There are many walkers, scooters and bikers who use the *entire road*. Please take a few extra minutes and get to school by an alternate method. Thank You from the Maple Grove PTA

TRAFFIC REMINDER

There is no parking in the Front Circle drive from 7:40 am -8:00 am or 2:30 pm -2:45 pm.

Drop off procedures for Front Circle Drive

Parents please stagger your drop-off time starting at 7:40 am until 7:55 am. When dropping off students please hold all students in your vehicle until you reach the crosswalk in the middle of the circle drive. This will give you time to say your good-byes and still allow the circle traffic to move through smoothly. When pulling into the circle drive please pull as far forward as possible. Please turn on your blinker when you are finished unloading this will signal to the staff directing traffic that you need to be able to pull out into the left side of the circle drive. Please watch staff directing traffic - there are reasons why they are not moving you around other vehicles. Students need to unload on the curbside to ensure their safety as cars move through the circle drive.

After 7:55 am students must enter through the front doors (unless they are in the cottages).

After 8:00 am students must check in the front office before going to class.

Pick-up Procedures for Front Circle Drive

No parents are to enter the circle drive until buses have pulled out of the circle drive or 2:30 pm. Parents need to please stay with your vehicle. Like in the morning we would appreciate you only loading after you have passed the crosswalk in the circle drive. This allows for staff to be able to keep students in a more centralized location and allows for traffic to move more smoothly through the circle drive. Please watch staff directing traffic there are reasons why they are not moving you around other vehicles. Please turn on your blinker when you are finished loading, this will signal to the staff directing traffic that you need to be able to pull out into the left side of the circle drive.

We appreciate your patience and cooperation as we implement slight changes to our front circle drive procedures. As we work together we can ensure the safety of all students.



3rd Annual Gala for Grown-Ups

February 20, 2009

Event Highlights:

- Adults Only Night Out
- Great Food & Drink
- Live Music & Dancing
- Live Auction
- Silent Auction for "Teacher Experiences"
- Keepsake Class Projects for Sale
- All proceeds benefit PTA Activities and the Maple Grove Technology Fund

Volunteer for Grizzly Gras!

Fun & Easy Volunteer Opportunities!

SET-UP

Help decorate, set-up tables, and get the auction items ready.

2 + hour shifts

9:00am—5:00pm

Fri, Feb 20th

EVENT NIGHT

There are a wide



range of volunteer opportunities the night of the gala! All shifts are only one hour so you'll still have plenty of time to enjoy the evening.

Choose from:

- ~ Check-in
- ~ Raffle Balloons
- ~ Silent Auction
- ~ Assist Caterers
- ~ Clean-up

1 hour shifts

6:30pm—11:30pm

Fri, Feb 20th

CONTACT:

Kathleen Remington
ktremington@msn.com

This is a great way to help out your kids, their school and have a lot of fun, too!

GOT CONNECTIONS?

We're looking for great Live Auction items!

Would you or someone you know like to donate an item or an experience?!

Ideas include:

- ~Vacation Home
- ~ Ski Passes
- ~ Golf, Tennis or Swim Lessons
- ~ Air Miles
- ~ Dinner for 2 - 4
- ~ Special Tours
- ~ Memberships or

Passes to Clubs, Museums, Theater
~ Anything unique!

CONTACTS:

Audrey Walters
audiewalters@yahoo.com
Angela Baier
angelabaier@msn.com



SAVE THE DATE

3RD Annual Gala for Grown-Ups

“The Grizzly Gras” (in honor of Mardi Gras)

Friday, February 20th, 2009 6:30pm – 10:00pm

at Calvary Church in Downtown Golden

\$30 Individual / \$50 Couple



What is the Gala?

The Gala is one of Maple Grove’s largest fundraising events - just for adults. There will be entertainment, a live auction, family friendly items for sale, and great food and drink. The theme this year is “Grizzly Gras”, in honor of Mardi Gras, and the event will be held in the Great Hall at Calvary Church in beautiful downtown Golden. Last year we raised over \$9,000 that went directly to the school’s technology fund. We aim to raise the bar this year and reach \$12,000 or more for additional technology needs and the many PTA sponsored programs. One way you can help us reach this goal is by becoming a **Maple Grove Partner**.

What is a Maple Grove Partner? It is you, a friend, family or business that donates a minimum of \$100 to the Maple Grove PTA. There are different levels of sponsorship (\$100, \$250 & \$500), and with each level increased benefits. Please look for more information on this in your child’s Friday Folder.

Please know that if you are unable to attend the Gala, but would like to help out financially or by volunteering your time, it is always needed and much appreciated. To make a monetary donation, please contact Tania Peterman at tania328@comcast.net. To volunteer your time please contact Kathleen Remington at ktremington@msn.com.

Remember to mark your calendar, call the babysitter, find your Mardi Gras outfit and join us for a fun and important night. Thank you for supporting Maple Grove Elementary and the PTA – your involvement is the key to our student’s success.

Why Keep Giving to the Maple Grove PTA ?

The Maple Grove PTA has given over \$32,000 back to the school in the last 12 months due to our successful fundraising. This is even more important now that 3/A and 3/B did not pass –this means that over \$77,000 in proposed improvements to the school's technology will not occur. The PTA Board has chosen to put our fundraising focus into 2 main fundraisers that are coming up in 2009: the GALA on February 20th and the Gallup at the Grove to be held on May 17th. We thought it would be a good idea to let you know where your dollars have gone in the last 12 months:

\$9,300 to run PTA programs and events such as: Destination Imagination, Drama Team, Field Day, Grandparents Day, Reflections, Science Fair, Sock Hop, Spelling Bee, Talent Show, Young Writers & Author Visit, which included a classroom book donation from Barnes & Noble night proceeds.

\$4,100 to school infrastructure: Landscaping improvements, Hospitality committee which provides teacher dinners during conferences, CSAP snacks for students, and Staff Appreciation (includes staff water and coffee, etc).

\$9,000 to Technology Fund (2008 GALA proceeds): so far \$8,645 has been allocated to 10 new laptops and software which represents $\frac{3}{4}$ of one new laptop cart that can then be checked out by the various classrooms.

\$2,700 in Teacher Grants: this money went directly into the K-6 classrooms plus DHH and Special Ed for classroom enrichment agreed upon by the teachers at each grade level.

\$7,800 for Spring Academic Support: items included, calculator kits, document cameras, speech material, classroom hearing transmitters, magnetic lapboards, tumbling mats, guided reading group materials, and new cots for the clinic.

We would just like to thank everyone for their generous support of these very important PTA programs and materials for our school. We cannot stop supporting our unique and successful school. The amazing achievements of our students and faculty are a direct reflection of your support. Please note that less than 5% of our budget expenses goes to overhead which includes supplies, printing, insurance and bank charges.

Don't forget all your donations to the Maple Grove PTA are tax deductible!

Maple Grove
Elementary School

PTA[®]
everychild.one voice.[®]



We Care Holiday Helpers

This small committee packs a big punch. The We Care Holiday Helpers run two events in the Fall/Winter; the Thanksgiving food drive and the holiday family sponsorship for our families in need. It is no surprise that the need this year was greater than in previous years. Maple Grove rose to the challenge and met that need. The food drive was the most successful ever. The committee tried something new this year by having each class donate a specific food item. The feedback on this change has been quite positive. The PTA extends a huge "thank you" to all of the families who donated food. A special thanks to Mary Beth Dasch and Julie Riffle for helping with the food drive.

The holiday families in need numbers also increased and again the community responded. The families are identified through Maple Grove staff and the necessary information passed on to the We Care Holiday Helpers committee. Food, clothing and gifts are provided. Thank you to all of Santa's helpers who sponsored all or part of a family and/or helped wrap the gifts and prepare the items for distribution.

Sincerely,

Lisa Condon, We Care Chairperson

Teacher Talk - Library News



January 2009

By Amy Stahura, Librarian

THANK YOU Book Fair Volunteers



Our Book Fairs not only raise funds to build the library collection, but also build excitement for reading! Because Maple Grove's book fairs have always been successful, Scholastic allows us to host their "custom" fair, which means we get to offer the largest selection of books available. It also means that it's a BIG project, and I couldn't pull it off without your help. It was fun working with, and getting to know a few of the wonderful Maple Grove parents and grandparents. So once again, **THANK YOU to: Jen Landmark, Gail Berkery, Janell Ficco, Amy Dietz, Lisa Schrag, Sara Perea, Tanya Dowell, Kerry Marr, Jim MacDougall, Kathy Ivain-Spritzer, Vivian Grilli, Jenney Thompson, Kai Savi, Claudia Basso, and Julie Riffle.**

The Book Fair was a success. Proceeds will result in approximately 250 new

books for the library. If you are interested in helping with the Spring Book Fair the week of April 20, contact Amy Stahura, Librarian, at 3/982-5808 or astahura@jeffco.k12.co.us.



School Store Grand Opening January 12, 2009

The School Store will be open Monday through Friday, before school (7:40-8:00) and after school (2:30-2:50) beginning January 12. Basic school supplies will be available: pencils, pens, paper, folders, scissors, rulers, erasers, pencil sharpeners, and more.

The School Store will NOT be open on Early Release Thursday afternoons.

If you have as little as 10 minutes, we need you! Because we have many avid readers (good problem), there is always an overflow of books needing to be checked in and shelved. Please consider volunteering in the library. You may commit to a weekly time to help or just drop in when you happen to be around. If shelving books isn't your thing, how about covering paperbacks with contact paper? Or straightening shelves? Or creating displays for new books, seasonal books, or curriculum themes? If you can help, stop by, call (3/982-1664), or email astahura@jeffco.k12.co.us. Thanks!



Hats Off to Cindi Bryant!

Last Spring, Ms. B. entered the "America the Beautiful Scavenger Hunt" contest through Scholastic Inc. Participants submitted questions of unusual and fun facts about their states. Those selected will have their questions published in the 53rd edition of Scholastic's book set "America the Beautiful." Each book in the set is a reference for each of our states, the District of Columbia, and Puerto Rico. The 53rd edition will be Fast Facts about the 50 States.

Ms. B's entry was selected for publication! Because of her time and

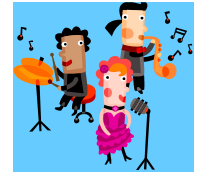
enthusiasm for geography, the Maple Grove Library will receive one copy of the complete set of "America the Beautiful," including the 53rd edition which will contain her scavenger hunt questions about Colorado.

We have already received 35 of the 53 books. The remainder will arrive as they are published through the end of 2009.

THANK YOU MS. B!

Jeffco Public Library has MANY high quality, safe resources for children. Go to <http://Jefferson.lib.co.us> > Kids & Teens > Databases for Kids (in left column). All of the databases contain information that has been reviewed by librarians and educators for accuracy, readability, and appropriate content. To use the databases, you must have a Jeffco Public Library card. If you don't have one, they are easily obtained, free of charge, at any branch of the Jeffco Public Libraries.

Teacher Talk - Music News



It was a busy December in music class! The 3rd graders and Maple Grove Ringers played to a full house at their concert on December 10th and the 6th graders performed holiday songs at the Golden Pond Retirement Community on December 16th. We even squeezed in a whole school, carol sing-a-long, led by the 6th graders! Many thanks to PTA for providing the music room with an iPod! All the music room CD's have been converted and are now easily accessed.

If you purchased an E Book or Gold C book for art, music or PE, we were able to raise almost \$800! Thank you for your support!!

The spring will bring many more performances: The 4th grade CO Program, a 5th Grade America Program, the 2nd Grade Musical and 1st Grade's end-of-the-year concert. Stay tuned.....

Musically Yours,

Miss Diefendorf

Reflections Program at Maple Grove was a Success!!!



The Reflections Program received so many beautiful pieces of artwork this year. Thank you to all of you talented students who were willing to put your works out there for all to enjoy.

The following participants' work was selected to move on the the county level:

Samantha McConnell and Shaye Mathias for Dance/Choreography

Julia Archer and Emma McCallum for their Musical Compositions

Abby McAdams, Erika Dowell, Samantha Lautrup, Annalisa Wescott, Sarah Bevington, Miranda Benfield, and Katherine Phenna for Visual Arts.

Julia Marsh, Brady Glass, Brooks Wood, Emily Harrington, Olivia Marsh, Wyatt Wood, and Simon Krupa for Photography.

The following participants' work received Honorable Mention-their work has been displayed at the Lakewood Library:

Annie Carlson and Sophie Dressel-Martin for Visual Arts

Amia Castro and Taage Dressel-Martin for Photography

Thank you to the following participants whose work has also been adorning the walls at the Lakewood Library during the month of December.

Chloe Glass, Brandon Hyland, Sarah Bevington, Annie Carlson, Hannah Richardson, Adam Strass burger, Esther Phenna, Lindsay Roberts, Siena Dute, Katee Harrington, Samantha Lautrup, Rachel Dowell, Jordyn Hyland, Erika Dowell, Sydney Bevington, Justin Lautrup, Mady Brotherton, Ben Schrag, Shaye Mathias, Shane McConnell, Emma McCallum, Julianne Todd, Olivia Marsh, Ammia Castro, Ian MacDougall, and Nathaniel Todd.

Congratulations to Samantha McConnell whose Jazz dance/choreography piece will move on to the next level; and to Katherine Phenna and Annalisa Wescott, whose Visual Arts pieces were chosen to move on to the next level.



Jeffco Public Schools Emergency School Closure Process

Its time once again for families to think about making plans for emergency school closures and severe weather. The district is aware of the implications of emergency school closures. We realize when schools shut down parents must make alternative plans, bus and food services must be altered, class and test schedules must change, and events must be cancelled. We also feel strongly that our students' education can best be served when they are in class; however, safety is our number one priority. We will always do what is best to safeguard the well-being of our students and staff, but sometimes closing schools is not the obvious choice. The school district covers 720 square miles with some schools located at elevations above 8,000 feet, while other schools are located minutes from fleets of city and county snow plows. In addition, Jeffco's location, nestled in the foothills, makes advanced weather predication a fickle business. Because some Jeffco Schools begin school before 7:30 a.m. and school buses are on the road, a decision to close must be made early. There have been times when the weather has changed, road conditions have deteriorated, or a storm has stalled over the area that a last minute decision has been made to close part of the district. These late decisions are made to protect our students and staff. There are many factors that are considered.

- Ideally before 5 a.m., school transportation personnel begin to patrol roads, bus stops, and known problem areas and report on road conditions.
- Reports are collected from the State Highway Patrol, police and the Colorado Department of Transportation.
- School personnel consider the safety of walking routes, sidewalks, school driveways, bus loops, and school parking lots.
- Beginning the night before an anticipated storm, the district receives weather updates from a private forecasting service, as well as from the National Weather Service and local weather reporters. Neighboring school systems are consulted when necessary.

Each day more than 350 Jeffco school buses transport approximately 18,000 students, who must wait at bus stops before being picked up. Many students walk to school, while thousands of teenagers drive to high schools in the early morning hours before it is light. Approximately 12,000 staff members make their way to Jeffco Public School facilities. The images of our bus drivers on slippery roads, of young children standing at frozen bus stops, and teens, or their parents, driving in hazardous conditions is always present when the decision is made to close schools. Once the decision is made by a Jeffco Public Schools team, the message must be disseminated quickly to our 151 schools and to the community. Calls are made to all principals and the media. The district hotline, at 303-982-6600, is typically updated first. The school closure Web page at <http://www.jeffcopublicschools.org/closures/index.html> is updated shortly after. Many schools send voicemails or e-mails directly to their parents via Campus Messenger.

The district does everything possible to alert the community in a timely manner. Since parents are the primary protectors, they will need to decide what is best for their children regardless of any decision by the school district. The option to keep children home when weather conditions are extreme is always at the parents' discretion and the school understands and respects the decision. Parents can contact the school and arrange for an excused student absence.

All families should make advanced arrangements for their children in case of school closures and for the rare situation when it is necessary to close an individual school because of a power failure or another circumstance. Children should know where to go if a parent will not be home and how to contact parents and guardians. Parent contact information, including work telephone numbers, should be kept up-to-date with the school. If you are instructed to pick up your student at a location other than their school due to a school closure, you will be asked to present photo ID before the student will be released. In cold weather students should be dressed appropriately. No one can predict when a fire alarm might go off or when buildings might have to be evacuated due to an emergency. Bulky coats and boots can be stored in classrooms, or other areas designated by the principal in addition to student lockers.

Working together we can ensure the safety of the Jeffco Public Schools community during the hazardous weather season. For additional information about emergency school closures see:

<http://www.jeffcopublicschools.org/closures/index.html>

[Log on to Jeffco's Web page for answers](#)

The new and improved Jeffco Web site lets students and parents stay connected to district news and events like the date and time of the next Board of Education meeting, the new school calendar, how to choose a preschool or what to do on a snow day. To find the latest news on schools, schedules and students turn to www.jeffcopublicschools.org. Check out some of the newest features on the Jeffco Web site:

[School Profiles](#) – Find detailed information about each Jeffco school, including links to test scores, the School Accountability Report and demographic information. Find more at [School Interest Nights](#) -- A number of Jeffco schools will host information meetings for prospective students and their families beginning on Tuesday, Nov. 11. Find more at www.jeffcopublicschools.org/enrollment

[Snow Day Information](#) – Watch a video that explains the factors taken into account for student and staff safety on snow days and the procedures the district takes to close schools. Find more at www.jeffcopublicschools.org/closures

[Choice Enrollment Information](#) – Families who wish to enroll their student in a school other than their neighborhood school must complete a Choice Enrollment Application. The next enrollment will be held on January 6 – 24, 2009 for the 2009-10 school year. Find more at www.jeffcopublicschools.org/enrollment

[2008 Celebration of Excellence](#) -- Videos of students, staff and community volunteers who were honored for their achievements in academics, athletics, arts and volunteerism. Find more at www.jeffcopublicschools.org/multimedia

[Gifted and Talented Programs](#) -- Information on programs and schools offered to gifted and talented students. Find more at www.jeffcopublicschools.org/programs

[Foreign Exchange Programs](#) -- Information on student exchange programs and study abroad programs. Find more at www.jeffcopublicschools.org/programs

Staff Stories

Wouldn't you love to know more about the teachers and staff? This is a new feature section of the Maple Leaf which will help foster connections at Maple Grove. Our first biography is about your [Music Teacher. Enjoy!](#)



Elke Diefendorf is the music teacher for grades K-6 at Maple Grove. She was born in Houston, TX and moved to upstate NY (near Syracuse) when she was 13. She graduated from SUNY Potsdam, Crane School of Music in 1995 and received her Masters of Music Education with an emphasis in Ethnomusicology from CU Boulder in 2000. Elke's primary instrument is her voice, but she also plays guitar and piano.

After college, Elke taught music in the US Virgin Islands (St Thomas) for 2 years. She moved to Denver in 1997. Elke's hobbies include cooking, hiking, camping, snowshoeing, travel, singing with the Alpine Chorale and technology. Elke's favorite holiday is Christmas and her favorite color is purple.

Elke's most memorable elementary school teacher was her 2nd grade teacher, Mrs. Montgomery. Mrs. Montgomery would allow Elke to read to the Kindergarteners during her literacy time.



■■■■ FAYE CROWE ARCHITECT, LLC
 faye@crowearchitect.com | 303.271.1553

Faye Crowe
 Architect LLC
 Fayearchitect.com
 303-271-1553
 "Best Kitchen Award"



RED ROCKS
 COMMUNITY COLLEGE

School-Age Child Care
 @ Maple Grove is now
ENROLLING for Fall!

...Homework
 Help!

Join Us For...

...Exercise!

...Great
 Crafts!



...Fun
 Activities!

...Caring
 Staff!

...Friends!

For More Information
 Call Daniel @
(303) 519-3742



**Green
 Mountain
 Dental
 Group**

Benedict O. Vanek, D.D.S.
Melvin J. Vanek, D.D.S.
Benedict O. Vanek Jr. D.D.S.
Steven J. Vanek, D.D.S.
13440 W Alameda Parkway
Lakewood, CO 80228
303-988-0711

www.greenmountaindentalgroup.com

New Patients Welcome

Family dentistry serving Lakewood for over 30 years

Dental care for Adults, Teens & Children

General Dentistry, Cosmetics, Orthodontics, & Invisalign

Paul's Kid-Sitting

Service now available!

Red Cross Certified, 13 years old, Maple Grove graduate and Manning 8th grader.

Paul Gagliardi will kid-sit in your home or his.

Available most afternoons, evenings and weekends - call for rates and references.

303-279-5196



Applewood Plumbing Heating & Electric

Fast Expert Repairs & Service for the homeowner by reliable, experience professionals

SINCE 1973

Call Today!

303-278-8424

Save & use this coupon to receive \$50 off your next service call

GREAT WALLS llc

Handyman, Remodeling, Drywall & Tile Services. New install & all repairs.

30yrs. Experience, Colorado Native
Free estimate

Call Steven 303-525-0645

Do you have:

A Will or Trust?

A Guardian for your children?

For a *free* initial consultation to discuss these and other related issues, Call Julie McVey, an estate planning attorney at **303.238.1707**

Maple Grove Parents & Staff will receive a discount on documents prepared.

Paws-itively Clean
self-serve dog wash
303-237-0130

Grooming 🐾 Nail Trimming 🐾 Accessories
1901 Youngfield Unit 109 Golden, CO 80401



**COLORADO
TAEKWONDO
INSTITUTE**

Martial Arts and Personal Development for all Ages

Call today to learn about our Introductory program. Set up a lesson for yourself and your child!

CTI Golden Campus
2001 Youngfield St Unit A
Golden, CO 80401
(NW Corner of 20th & Youngfield)
(303) 233-0039



Let me show you the new Creative Memories- Traditional scrapbooking, digital memory books, even framing.

Contact Nancy Fanning at
720-641-3971 or fabfotoalbums@msn.com or
my website at
www.mycmsite.com/nancyfanning



