



# MAPLE LEAF NEWS

## Nov./Dec. 2008

PTA Web site:  
<http://www.maplegrove-pta.org>

MAPLE LEAF NEWS Nov./Dec.  
2008

### News from the PTA Presidents

Sasha Overholt and Kathryn Todd



We hope you enjoy this second edition of the Maple Leaf. The PTA is busy making changes that we believe reflect the needs of our membership. We are providing information to the membership in several ways:

- The weekly PTA email
- The newsletter
- Additional e mails to the membership regarding important issues
- The PTA webpage
- Information and postings at the PTA corner
- Monthly PTA meetings

The emphasis on electronic paperless communication is in response to membership comments, a means of saving money on production of materials, and an environmental choice. We would love any feedback on the changes so we can continue serving the needs of the membership and community.

It was great to see so many people at the October PTA meeting. The nutrition information presented by Brenda Christy was interesting and informative. Her presentation led us to consider the overall health and fitness of our children. Last months' presentation was essentially the first of several we envision on the physical and mental health and fitness of our children and community. Our next meeting is November 11, 2008, at 8:00 a.m. in the cafeteria. Our main topic will be Health and Safety. Our Health and Safety Chair, JJ Beattie, will be leading a discussion on the current health and safety issues in the school and what parents would like to see in those areas. A change this year was the elimination of morning recess and the institution of mini breaks. The PTA would like to offer constructive comments regarding how the mini breaks are working for your child(ren) for consideration in the planning of next years' curriculum. Please send comments you may have to Kathryn Todd at [kaepletodd@comcast.net](mailto:kaepletodd@comcast.net) or Sasha Overholt at [dwo\\_sao@hotmail.com](mailto:dwo_sao@hotmail.com).

Please consider that there are many ways to volunteer with the PTA, in our school and our community. Gala and Gallup planning are underway and there are lots of opportunities for helping in a small or a big way with these groups. We have reduced our fundraisers to focus on these two main events. However, we should not overlook the benefits of our smaller fund raisers. Who doesn't need a butter braid or two on hand for holiday entertaining?!?!. Don't forget the convenience of doing your holiday gift card shopping through the PTA. A percentage of your purchase is returned by the various vendors to the PTA.

Finally, we are literally rolling out the barrel, the recycling barrel that is. Jeffco does not have an official recycling program, however the MGPTA has arranged with Waste Management for a limited paper and aluminum recycling program at the school. The school is working with the PTA to implement the program and details will be coming home soon.

**Thank you to all of our volunteers and Happy Holidays!**

## News from the Principal: Michael Maffoni



Dear Maple Grove Families,

As November commences it is appropriate to pause and express our thanks for the support from the entire Maple Grove community. Speaking for the faculty, we want to extend our gratitude to our families for your continued partnership. Maple Grove is a great place because of the caliber of families who choose to make Maple Grove their school 'home.' Thank you for all that you do to make the home-school relationship strong.

October conferences were a success. Teachers worked hard to ensure that individual conference times met the needs of parents. During the conferences, you gleaned valuable insights into your child's academic and social progress thus far. I encourage you to continue to take an active role in your child's year. Thank you again for attending.

Earlier in the month, Maple Grove had its second Early Release day for this year. Thank you again for the opportunity this affords our teachers for staff development. We realize an Early Release day requires families to arrange for childcare. This month the Maple Grove staff again joined with teachers from Stober Elementary and Prospect Valley Elementary to continue working on curriculum alignment in the area of writing. The afternoon was extremely beneficial as teachers examined the Jeffco curriculum and discussed implementation. The conversations between schools and grade levels will strengthen instructional practice and benefit our kids. Our next Early Release is November 20.

Halloween is approaching quickly and we anticipate a "spook-tacular" afternoon. Thank you in advance to the many volunteers who will make our 2008-2009 Halloween parties such fun! Please remember that our Halloween parade will begin at 1 p.m. for full day kindergarten-6th grade and 9:30 a.m. for half-day kindergarten. We love seeing so many families at Maple Grove and hope you can make it! Thank you again to PTA for their continued support for school-wide activities such as our Halloween parties.

Finally, after everyone has recovered from the Halloween fun, we begin looking forward to a busy November around Maple Grove. Over the next month, we welcome you into the building for several important events that cultivate a strong community relationship. Please look for information in this month's *Maple Leaf* detailing the upcoming Grandparents Day and plan to attend the Thanksgiving Feast on November 20th. Both events are highly anticipated and we look forward to them. We hope in the days to come that we will see you around Maple Grove.

Sincerely,

Michael Maffoni

### DEAR EDITOR

The *Maple Leaf* newsletter is published monthly by the Maple Grove PTA. We hope to keep you updated on Maple Grove news and informed about issues that affect your children.

To submit articles: **Email plain text or MS Word document to: [mapleleafnews@yahoo.com](mailto:mapleleafnews@yahoo.com)**  
**ARTICLE DEADLINE – 15<sup>th</sup> of January**  
**NO EXCEPTIONS!**



Sign up your child now for afterschool music classes right here at Maple Grove Elementary **STARTING Nov. 3!** Your child will LOVE learning and playing music with their peers! We offer **Beginning Keyboard** and **Beginning Guitar** classes that are affordable and convenient. Each class is filled with games, laughter, and FUN! **Keyboards For Kids** has been teaching children to love music since 2003. Kids love our teachers and our positive supportive atmosphere! Enrolling now! Classes are small and fill quickly. We have payment plans and tuition assistance available. See our website to register and get more information about us. Look for our flyer in your child's folder!

[www.KeyboardsForKids.com](http://www.KeyboardsForKids.com)

303-215-1KFK (1535)

## CALENDAR FOR NOVEMBER/DECEMBER

Oct. 29-Nov.12	<b>ButterBraid Sales</b>
November 04	2:30-3:15 Spanish – Cheer's rm
November 06	<b>Deadline Holiday Gift Card Orders</b>
November 06	<b>1:45-2:15 Reflections Celebration -Cafeteria</b>
November 06	2:30-3:45 Taekwondo - Gym /Spanish– Cheers rm.
November 07	No School – Teacher Inservice Day
November 11	2:30-3:15 Spanish – Cheer's rm
November 12	2:30-3:30 Creative Workshops – Art rm
November 13	8:00 PTA mtg
November 13	2:30-3:15 Spanish – Cheer's rm
November 13	2:30-3:45 Taekwondo - Gym
November 13	4:00 p.m. Talent Show Rehearsal
November 14	<b>6:00 p.m. Talent Show @ Manning School</b>
November 17	Flu Shots
November 18	<b>Holiday Gift Cards Distributed / Maple Grove Book Fair</b>
November 19	2:30-3:30 Creative Workshops – Art rm/ <b>Maple Grove Book Fair</b>
November 20	<b>Thanksgiving Feast (prepaid reservations only) Butterbraid Delivery/Pick Up—CHECK THOSE BACK PACKS!!!!</b>
November 20	Early Release Day (1:00)/ <b>Maple Grove Book Fair</b>
November 20	1:05-1:50 Spanish – Cheer's rm
November 20	1:00-2:15 Taekwondo - Gym
November 24	2:45 PIE mtg
November 25	<b>1:45 Grandparent's &amp; Special Friend's Day</b>
November 25	2:30-3:15 Spanish – Cheer's rm.
November 26-28	Thanksgiving Break
December 02	2:30-3:15 Spanish – Cheer's rm
December 03	2:30-3:30 Creative Workshops – Art rm
December 04	2:30-3:15 Spanish (Fiesta) – Cheer's rm
December 04	2:30-3:45 Taekwondo - Gym
December 10	2:30-3:30 Creative Workshops – Art rm
December 10	7:00-8:00 p.m. Holiday Concert/Gr 3 and Handbells <b>Maple Grove Ringers</b>
December 11	2:30-3:45 Taekwondo - Gym
December 15	11:30-1:00 Gr 1 to Planetarium
December 16	10:00-12:00 Gr 6 Music Performance @ Golden Pond Retirement Community
December 19	No School, Comp Day for Teacher Conferences
Dec. 22- January 2	Winter Break
January 5	No School, Teacher Inservice Day
January 6	Students Return

## BUDGET CRISIS UPDATE

Superintendent Cindy Stevenson is holding a series of community meetings in the next few weeks to tell an ominous story –

Jeffco Public Schools is facing \$35 million in budget reductions over the course of the next three years (2009-2012). Here's the challenge: how to meet increasing community expectations, increasing mandates and increasing costs with limited resources.

Employee budget workgroups were asked to provide a tentative list of reductions totaling six percent over three years. Now, the community is giving input.

What could those budget cuts mean for Jeffco? Here's a preliminary look into what could be Jeffco's future over the next three years:

### Elementary reductions

\$11,421,000

- Loss of teachers
- Loss of assistant principals
- Loss of custodial support
- Loss of clinic aide time and paraprofessional support
- Loss of instructional funding

### Middle level reductions

\$3,509,400

- Loss of teachers
- Loss of assistant principals
- Loss of instructional funding
- Loss of custodial support
- Loss of clinic aide time and paraprofessional support

### Senior high reductions

\$8,394,900

- Loss of teachers
- Loss of assistant principals
- Loss of instructional funding
- Loss of counselors
- Loss of custodial support
- Loss of clinic aide time and paraprofessional support
- Loss of campus supervisors
- Reduction in senior high bus routes
- Slowing or eliminating the expansion of Warren Tech



See Budget Crisis continued Page 5.....

**Budget Crisis continued from page 3.****Central services**

\$12,183,400

- Loss of support in budget and accounting
- Loss of support in curriculum, leadership training, teacher training, and instructional coaches
- Loss of transportation
- Loss of maintenance and custodial support
- Loss of technology support in both operations and instruction
- Loss of human resources support including hiring and substitutes

For a complete list of preliminary recommended reductions, please visit:

<http://www.jeffcopublicschools.org/finance/index.html>

The district is in the preliminary stages of thinking through proposed reductions and the Board of Education will make final decisions in the spring. Please contact your school principal if you have any questions about the budget information or Communications Services at 303-982-6808.

**Safety Alert: Safety Alert:**

**Please refrain from driving down Braun Road behind the school before and after school. There are many walkers, scooters and bikers who use the *entire road*. Please take a few extra minutes and get to school by an alternate method.**

**Thank You. Maple Grove PTA**

**TRAFFIC REMINDER**

There is no parking in the Front Circle drive from 7:40 am -8:00 am or 2:30 pm -2:45 pm.

***Drop off procedures for Front Circle Drive***

Parents please stager your drop off time starting at 7:40 am until 7:55 am. When dropping off students please hold all students in your vehicle until you reach the crosswalk in the middle of the circle drive. This will give you time to say your good-byes and still allow the circle traffic to move through smoothly. When pulling into the circle drive please pull as far forward as possible. Please turn on your blinker when you are finished unloading this will signal to the staff directing traffic that you need to be able to pull out into the left side of the circle drive. Please watch staff directing traffic there are reasons why they are not moving you around other vehicles. Students need to unload on the curbside to ensure their safety as cars move through the circle drive.

After 7:55 am students must enter through the front doors; unless they are in the cottages.

After 8:00 am students must check in the front office before going to class.

***Pick up procedures for Front Circle Drive***

No parents are to enter the circle drive until buses have pulled out of the circle drive or 2:30 pm. Parents need to please stay with your vehicle. Like in the morning we would appreciate you only loading after you have passed the crosswalk in the circle drive. This allows for staff to be able to keep students in a more centralized location and allows for traffic to move more smoothly through the circle drive. Please watch staff directing traffic there are reasons why they are not moving you around other vehicles. Please turn on your blinker when you are finished loading, this will signal to the staff directing traffic that you need to be able to pull out into the left side of the circle drive.

We appreciate your patience and cooperation as we implement slight changes to our front circle drive procedures. As we work together we can ensure the safety of all students.

## Grandparent's and Special Friends Day At Maple Grove

Tuesday, November 25<sup>th</sup>

**Have your grandparent or special friend visit your school and meet your teacher!**

Full day kids (grades K-6):

1:45 – 2:10 snacks and coffee provided in cafeteria

2:10 – 2:30 Grandparents visit classrooms

Half day kids (k):

10:30 – 11:00 songs and games in half day classroom

(Grandparents and special friends only, please)

## Maple Grove Talent Show



### MAPLE GROVE TALENT SHOW

Come One....Come All to the 11th Annual 2008 Maple Grove Talent Show. Auditions are over and our performers are practicing and polishing their acts. This year's show is on Friday, November 14, 2008 at 6:00 p.m. in the Manning Middle School auditorium. While there is no cost to get into the show, we encourage all of you to come hungry for desserts to support our annual Bake Sale, put on once again by Lori Guziak Jensen and our wonderful PTA.

Congratulations to this year's Masters of Ceremonies: Abby Berkery, Ana Cooke, Grady Jensen, Sara Landucci, Molly Lange, and Sammi Steele. They will be working hard over the next couple of weeks to prepare their scripts for the show. All who auditioned were exceptional, so it made this year's decision quite difficult.

Dress Rehearsal instructions for participants that are in the show: All performers must attend the mandatory dress rehearsal on Thursday, November 13, 2008. Specific rehearsal times for each individual will be sent home in Friday folders within the next couple of weeks, so keep an eye open for those. Also, if you are using a cd for the show, you must write your name and the name of your song clearly on the cd. Come to dress rehearsal in full costume and with any props you may be using. Be ready to go. If you need help or have any questions, please contact Jill Nagode at 303-384-9322. As they say in show biz, have fun and "Break a Leg."

See you there...

Date: Friday, November 14, 2008

Time: 6:00 p.m.

Location: Manning Middle School Auditorium



## Now's Your Chance to Order Holiday Gift Cards!

### The PTA is Accepting VISA/MasterCard and Discover

Do your Holiday shopping by using gift cards and support your Maple Grove PTA at the same time. We have gift cards available from over thirty vendors so there's something for everyone. They make great teacher gifts, stocking stuffer, are easy to send and always fit perfectly! Simply fill out the order form below and on the back and turn it into the PTA box, in the main office with a check made out to Maple Grove PTA, by

Thursday, November 6<sup>th</sup> 2008.

Want to use a credit card instead? Call any PTA Board member or Meg Dalton (303) 279-4479 to schedule a time to swipe your card! The gift cards work the same as cash and for each card purchased, Maple Grove earns 2-15% from the vendor!

Your gift cards will be received by **Tuesday, November 18<sup>th</sup> 2008**

	<u>Quantity</u>	<u>Cost</u>	<u>Total</u>
American Eagle	_____	\$25.00	_____
Barnes & Noble	_____	\$10.00	_____
Barnes & Noble	_____	\$25.00	_____
Baskin Robbins	_____	\$2.00	_____
Bath & Body Works	_____	\$10.00	_____
Bath & Body Works	_____	\$25.00	_____
Bed, Bath & Beyond	_____	\$25.00	_____
Best Buy	_____	\$25.00	_____
Best Buy	_____	\$100.00	_____
Blockbuster	_____	\$10.00	_____
Blockbuster Night	_____	\$12.00	_____
(2 movies, 2 sodas, popcorn tub)			
Build-A-Bear Workshop	_____	\$25.00	_____
Chili's	_____	\$25.00	_____
(On The Border, Maggiano's, Macaroni Grill)			
Chipotle	_____	\$10.00	_____
Claire's	_____	\$10.00	_____
Cold Stone	_____	\$10.00	_____
Crate and Barrel	_____	\$25.00	_____
Dave N Buster's	_____	\$25.00	_____
<b>Subtotal Page 1:</b>			_____



	Qty	Cost	Total
Dick's Sporting Goods	_____	\$25.00	_____
Dillard's	_____	\$25.00	_____
Domino's Pizza	_____	\$14.00	_____
(1 lg. pizza w/ 1 topping, 2 liter coke)			
Eddie Bauer	_____	\$25.00	_____
Gap	_____	\$25.00	_____
(Banana Republic, Old Navy)			
Harry & David	_____	\$25.00	_____
iTunes	_____	\$15.00	_____
Jamba Juice	_____	\$10.00	_____
KB Toys	_____	\$20.00	_____
Kohl's	_____	\$25.00	_____
Macy's	_____	\$25.00	_____
Ocean Journey/Landry's	_____	\$25.00	_____
(Joe's Crab Shack, Simms Landing)			
P. F. Chang's China Bistro	_____	\$25.00	_____
Panera Bread	_____	\$10.00	_____
Pizza Hut	_____	\$10.00	_____
Red Lobster	_____	\$25.00	_____
(Olive Garden)			
Sports Authority	_____	\$25.00	_____
Staples	_____	\$25.00	_____
Starbucks	_____	\$10.00	_____
Starbucks	_____	\$25.00	_____
The Children's Place	_____	\$25.00	_____
The Chop House	_____	\$25.00	_____
United Artists	_____	\$9.00	_____
(Regal entertainment)			
United Artists	_____	\$25.00	_____
(Regal entertainment)			
Wendy's	_____	\$10.00	_____

Subtotal Page 2: \_\_\_\_\_

Plus Subtotal Page 1: \_\_\_\_\_

Grand Total: \_\_\_\_\_

Name \_\_\_\_\_ Child's name \_\_\_\_\_

Address \_\_\_\_\_ Classroom \_\_\_\_\_

Phone \_\_\_\_\_

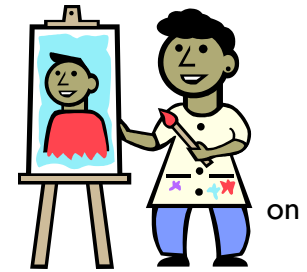
**Delivery options** \_\_\_\_\_ Send home with child,

**Check one** \_\_\_\_\_ Pick up on Tuesday, November 18<sup>th</sup> 2008 2:30 pm. by bike racks, from Meg Dalton

\_\_\_\_\_ Call Meg Dalton for arrangements 303-279-4479

## Celebrate Reflections!

Thank you to all the participants in Reflections for their wonderful works of "Wow" art.  
There will be a celebration for Reflections participants in the cafeteria  
November 6<sup>th</sup> at 1:30.



We will notify your teachers so you can be released from class early to attend!

## Teacher Talk - Library News



## Book Fair

November 18, 19, 20

Our book fair is sure to be an adventure this fall!

If you have already signed up to volunteer for this event THANK YOU, and Mrs. Stahura will be contacting you soon.

If you haven't signed up yet, please do! There is always lots to do and it's great fun. We'll need help with decorating, signs, setting up the fair, teacher wish lists, helping the little ones write their wish lists, running cash registers, assisting customers, ordering restock, and packing it all back up.

**Contact Amy Stahura if you can help.**

[astahura@jeffco.k12.co.us](mailto:astahura@jeffco.k12.co.us) or 303 982-1664 voice mail.

## Teacher Talk - Gym and Music News

### Gym News

As always, we have been having lots of fun learning new skills in the gym! Grades 1-3 have continued to work on their basic skills and we are beginning to work on jumping and landing, balancing skills, and transferring weight in different ways. We are using all of these skills in our current tumbling unit in which we are using our new tumbling mats purchased by the PTA last spring! It's been great!



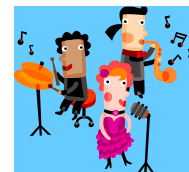
Grades 4-6 recently finished a lacrosse unit. Not many students (nor the teacher) had played before so we did lots of learning and laughing together as we tried out our lacrosse sticks with each other. It's always fun to jump into something new. We are now on to basketball. We are really focusing on using our skills in more game situations and the 5/6 kids even get to referee their own games!

The 5<sup>th</sup> and 6<sup>th</sup> grade track team also participated in the Wheat Ridge area elementary meet on Wednesday, October 1<sup>st</sup> at Jeffco Stadium. We had almost 60 students try out for a spot on the team with 41 students actually making the team. It is the largest number of participants we've ever had at Maple Grove. It was great to have so many students come out for the team. Team members included:

5 <sup>th</sup> Grade		6 <sup>th</sup> Grade	
Rhett Cito	Nyla Chamberlin	Erin Dalton	Riley Elgerd
Paul Cowie	Bethany Cooke	Julianne Engquist	Nate Graveling
Zack Culter	Ellie Dale	Claire Harris	Cole Greff
Andy Frank	Siena Dute	Kasee Horton	Willie Harris
Alec Hornecker	Bailee Knott	Sara Landucci	Trevor Kehe
Connor Karaffa	Samantha McConnell	Rachel Litz	Kasra Roostan
Dom Landucci	Cierra Sesay	Keisha Sesay	Mark Seaholm
Nick Michas	Morgan Westfall	Sammi Steele	Nicholas Westfall
Jared Nagode	Susan Whitney	Ashleigh VanDeusen	Wes Whitney
Jake Pott		Samantha Weese	Grace Carlson
Nick Young			Duncan Williams

### Music News

It has been a busy fall in music! The holidays are just around the corner and the kids are excited to get back on stage and perform. Please mark your calendars for these upcoming events:



- Join us on Wednesday December 10 for the annual **Third Grade Holiday concert** with special guests, **The Maple Grove Ringers**. Don't miss this special evening. It will surely get you in the holiday spirit!
- On December 16, all the 6<sup>th</sup> graders will be visiting residents at the Golden Pond Retirement Community in Golden. This is a wonderful community service opportunity for the kids and the added benefit is the happiness that comes from sharing music with others during the holidays.

Stay tuned for more exciting concerts in the Spring!

Miss Diefendorf



**SAVE THE DATE**  
*Thursday, November 13, 2008*

Jefferson Center for Mental Health presents

**FREE!**

*Helping Kids Thrive*  
*18th Annual Parenting Conference*  
*You Have the Job. . .*  
*We Have the Tools*

*"This is a very good program that provides a parent with alternatives & knowledge of raising your children. Thank you."*

*"Great job!"*

*"These workshops are extremely important guidance sessions"*

*"Very informative workshop, please keep them going!"*

Location: Lakewood High School

9700 W. 8th Avenue

Time: 5:30 - 9:00 p.m.

Evening includes Light Refreshments and Resource Tables  
FREE supervised children's activities on-site while you attend the conference.  
Snacks will be provided. Children *must* be potty-trained.

Available Classes:

- The Preschool Years: Creating a Blueprint for Children's Early Success
- The Elementary Years: Foundation for Healthy Growth (English & Spanish)
- The Teen Years: Framing Boundaries and Expectations
- Is it a Phase or a Time to Worry (English & Spanish)
- Empowering Successful Kids
- Boys & Girls: Why are They So Different?
- Bullying
- Juvenile Justice Training

Visit our website ([www.jcmh.org](http://www.jcmh.org))



Jefferson Center  
for mental health



**Paul's Kid-Sitting**

Service now available!

Red Cross Certified, 13 years old, Maple Grove graduate and Manning 8<sup>th</sup> grader.

Paul Gagliardi will kid-sit in your home or his.

Available most afternoons, evenings and weekends - call for rates and references.

**303-279-5196**



Applewood Plumbing Heating & Electric

Fast Expert Repairs & Service for the homeowner by reliable, experience professionals

Call Today!

303-278-8424

Save & use this coupon to receive \$50 off your next service call

**GREAT WALLS llc**

Handyman, Remodeling, Drywall & Tile Services. New install & all repairs.

30yrs. Experience, Colorado Native  
Free estimate

Call Steven 303-525-0645

**Do you have:**

**A Will or Trust?**

**A Guardian for your children?**

For a *free* initial consultation to discuss these and other related issues, Call Julie McVey, an estate planning attorney at **303.238.1707**

Maple Grove Parents & Staff will receive a discount on documents prepared.

**Paws-itively Clean**  
**self-serve dog wash**  
**303-237-0130**

Grooming 🐾 Nail Trimming 🐾 Accessories  
1901 Youngfield Unit 109 Golden, CO 80401



**COLORADO  
TAEKWONDO  
INSTITUTE**

Martial Arts and Personal Development for all Ages

Call today to learn about our Introductory program. Set up a lesson for yourself and your child!

CTI Golden Campus  
2001 Youngfield St Unit A  
Golden, CO 80401  
(NW Corner of 20th & Youngfield)  
(303) 233-0039



Let me show you the new Creative Memories- Traditional scrapbooking, digital memory books, even framing.

Contact Nancy Fanning at  
720-641-3971 or [fabfotoalbums@msn.com](mailto:fabfotoalbums@msn.com) or  
my website at  
[www.mycmsite.com/nancyfanning](http://www.mycmsite.com/nancyfanning)



\*\*\*  
 FAYE CROWE ARCHITECT, LLC  
 faye@crowe-architect.com | 303.271.1553

Faye Crowe  
 Architect LLC  
 Fayearchitect.com  
 303-271-1553  
 "Best Kitchen Award"



RED ROCKS  
 COMMUNITY COLLEGE

**School-Age Child Care  
 @ Maple Grove is now  
 ENROLLING for Fall!**

...Homework  
 Help!

Join Us For...

...Exercise!

...Great  
 Crafts!



...Fun  
 Activities!

...Caring  
 Staff!

...Friends!

**For More Information  
 Call Daniel @  
 (303) 519-3742**



**Green  
 Mountain  
 Dental  
 Group**

**Benedict O. Vanek, D.D.S.  
 Melvin J. Vanek, D.D.S.  
 Benedict O. Vanek Jr. D.D.S.  
 Steven J. Vanek, D.D.S.  
 13440 W Alameda Parkway  
 Lakewood, CO 80228  
 303-988-0711**

**www.greenmountaindentalgroup.com**

**New Patients Welcome**

**Family dentistry serving Lakewood for over 30 years**

**Dental care for Adults, Teens & Children**

**General Dentistry, Cosmetics, Orthodontics, & Invisalign**